

How to Assemble a Scottco Steel Truss Frame Dock



Step #1

Start by placing your floats on flat ground at the desired spacing. Next place the Galvanized steel truss frames on top of floats. Bolt frames to floats using $\frac{1}{2}$ "x3" Hex bolt sets.

Note: If Scottco knows your float placement in advance, our fabrication department can drill out the holes before the frames are galvanized to avoid drilling in the field.

Note: When attaching multiple frames together $\frac{1}{2}$ "x2" Hex bolt sets should be used at the corners and $\frac{1}{2}$ "x1.5" Hex bolt sets for attaching frames end to end or side by side throughout.



Step #2

Lay the sleeper boards out on metal stringers.



Step #3

Using a Sharpie, mark on the sleeper where the holes need to be drilled.



Step #4

Using a small drill bit, drill through the board at the sharpie mark. Once pilot hole is drilled flip board over, use a paddle bit and drill $\frac{1}{4}$ " or so down to recess the Carriage bolt head.

Note: *If you don't flip the board over before using the paddle bit the holes wont line up, so be aware of that.*



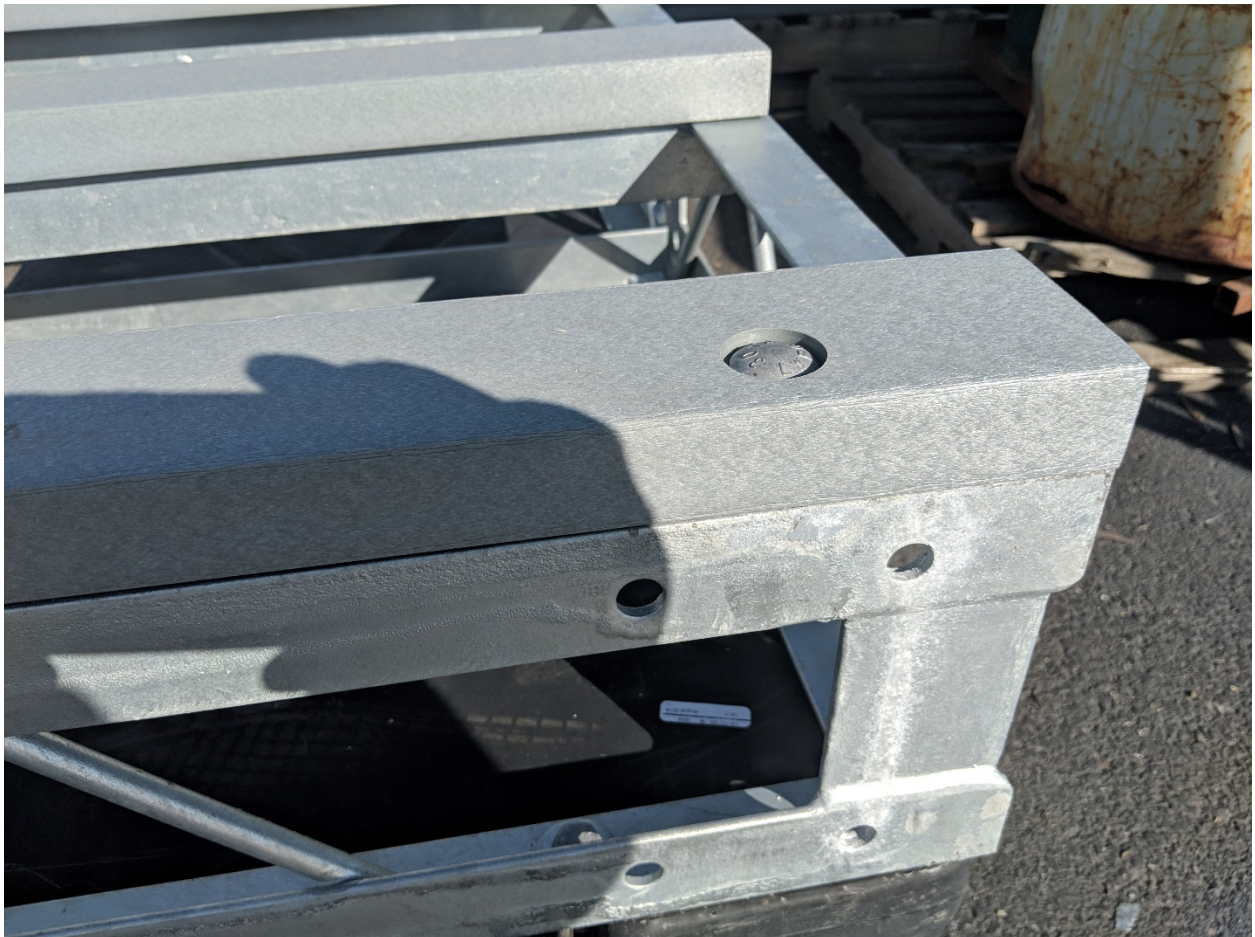
Step #5

Once you drill with the paddle bit, finish hole by using a ½" drill bit all the way through.



Step #6

Once holes are drilled, bolt sleepers to the frames using the 2.5" carriage bolt sets.



Step #6 continued



Step #7

Next step is connecting the fascia boards.

Note: ---Clamps come in handy for this step---

Before you start, remember to hold the fascia above the sleepers to the height of your decking, making the Fascia flush with the decking. If you lay a decking board on top of the sleepers it's easier to know how high to raise the fascia boards

Once fascia is clamped and in place use a sharpie to mark where the holes need to be drilled. Then repeat the same steps as you did on the sleepers.

Remember to use the paddle bit on the opposite sides of the sharpie marks otherwise drilled holes wont line up with the frame holes.



Step 7 continued



Step #8

Bolt the fascia boards to the frames using the 2.5" carriage bolts.

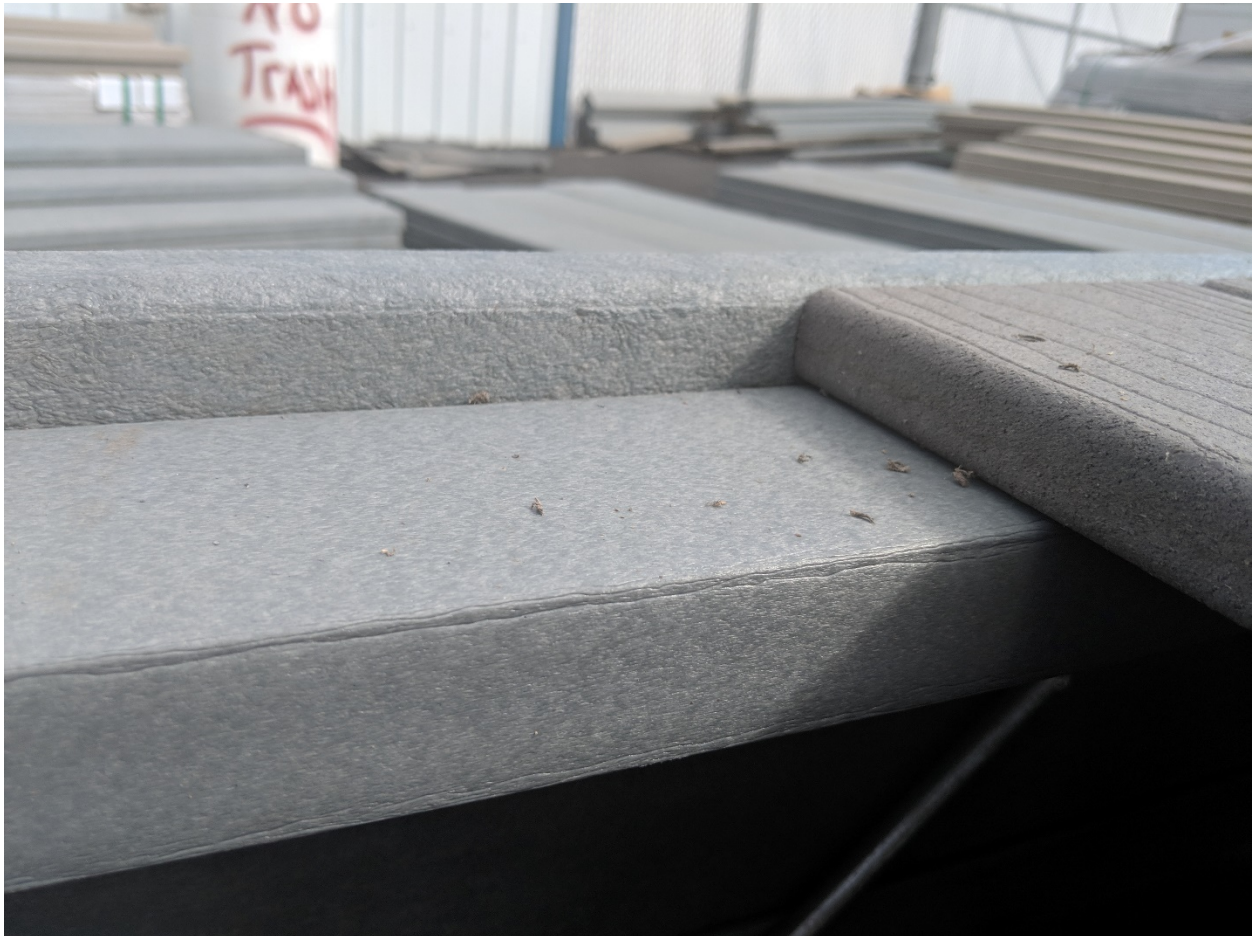


Step #9

The 9th step is the decking layout.

Cut the boards to the desired width and lay out on the deck.

Note: Before you start screwing the boards down make sure you know how far apart you want to space the boards apart.



Step 9 continued



Step #10

Enjoy your brand-new Scottco Galvanized Truss Frame Dock!

