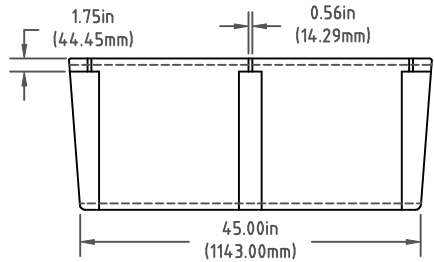
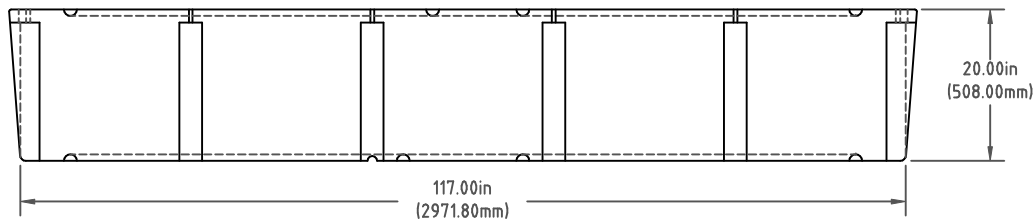
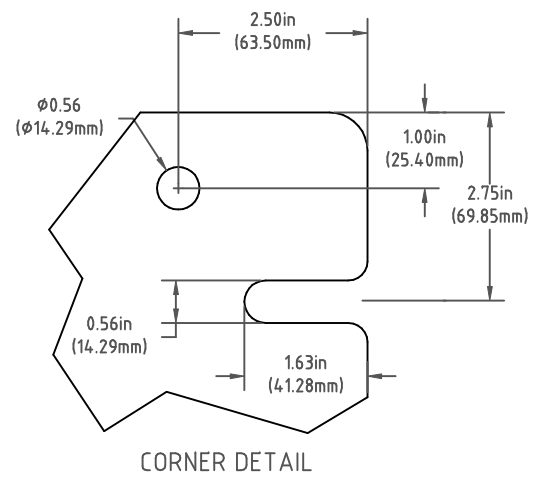
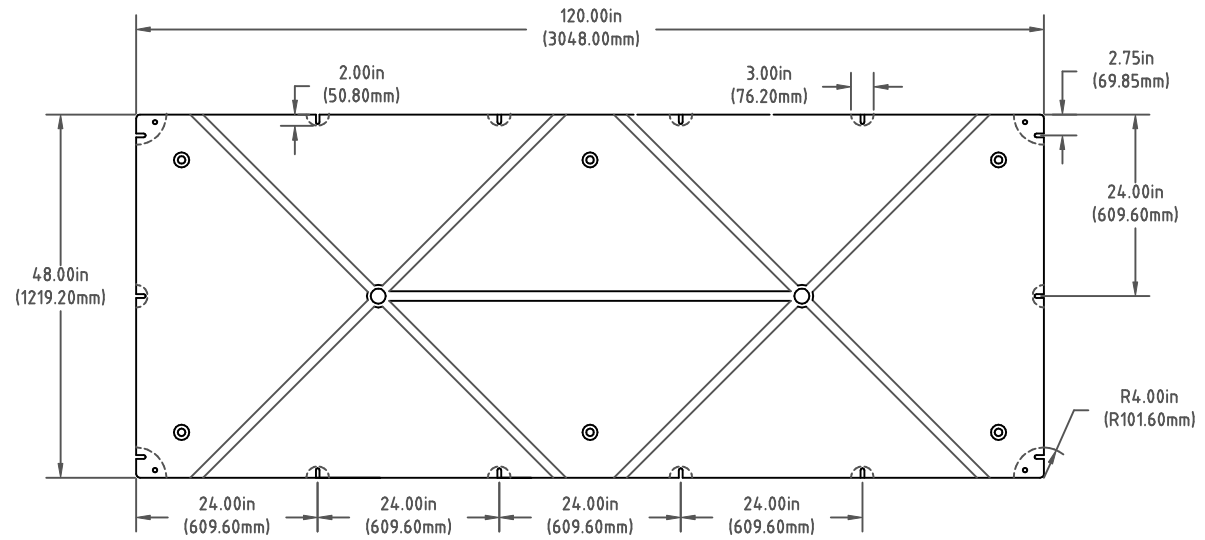


Copyright. All information furnished within this document, electronic file or design correspondence is the property of Den Hartog industries, Inc. and shall not be used, disclosed to others or copied without the expressed written consent of Den Hartog Industries, Inc.



		DRAWN / DATE DHJ 6/27/11		MATERIAL POLYETHYLENE 0.150in(3.81mm) NOM. WALL	
		APPRD. / DATE REH 10/24/11			
REV	DESCRIPTION	BY / DATE	CCN	SHOT WEIGHT: 111 LBS.	
ALL DIMENSIONS ARE IN DECIMAL INCHES TOLERANCES UNLESS OTHERWISE SPECIFIED				NOTES: 1. BUOYANCY IS 3690 LBS.(1674 KG.)	
POLYETHYLENE ±1% @ 68 ° F		THIRD ANGLE PROJECTION ANSI 14.5M		SHIPPING WEIGHT: FF 176 LBS.	
METAL DECIMAL ± .125" FRACTION ± 1/4" ANGLE ± 1°				FINISH:	



Den Hartog
INDUSTRIES, INC.

Ace Roto-Mold Injection Molding Blow Molding Sow Joy
4010 HOSPERS DRIVE S. BOX 425, HOSPERS, IOWA 51238-0425

DESCRIPTION DOCK FLOAT	
SCALE N.S.	PART NO. 48120-20